



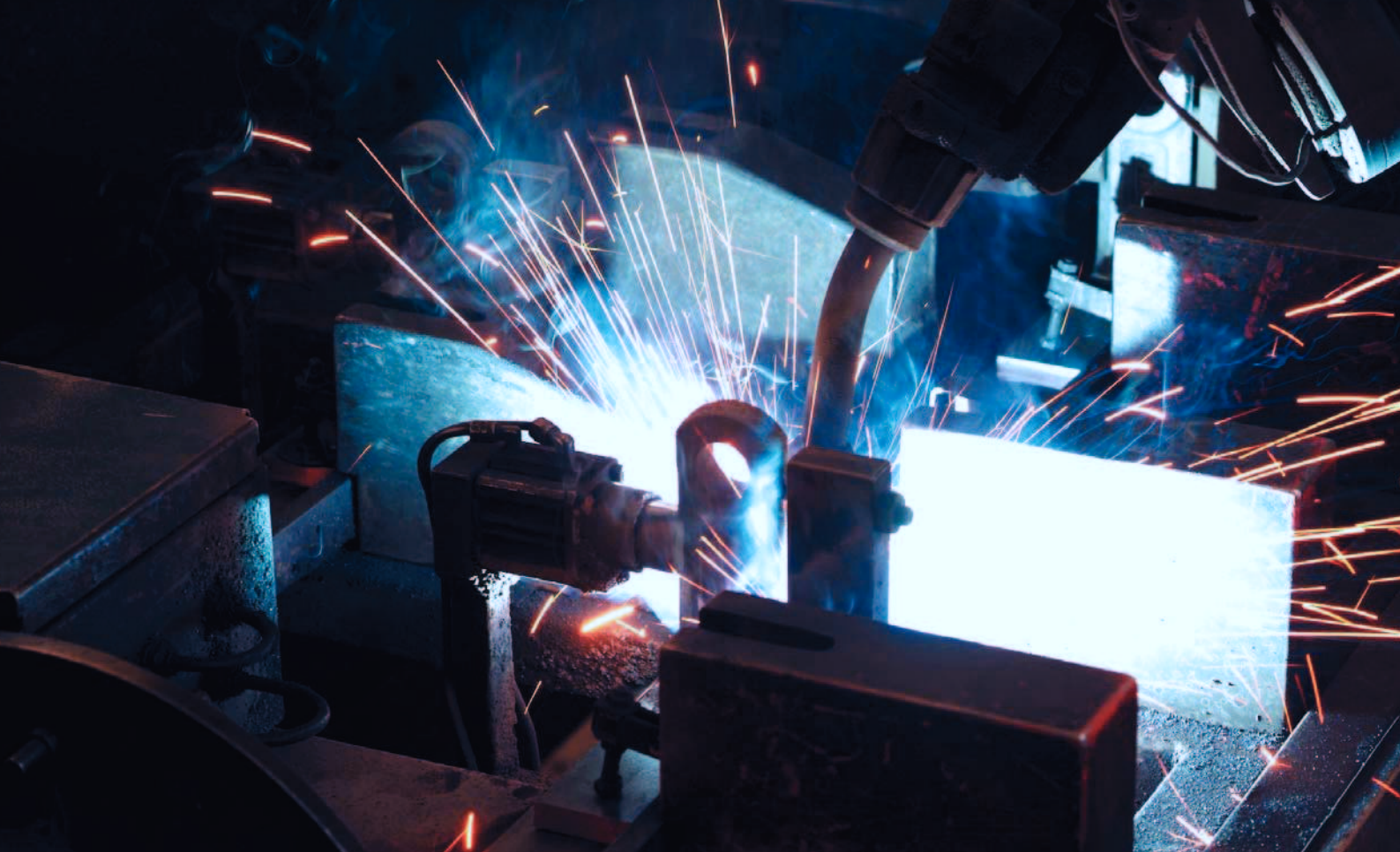
Drop Forged Chains



To link for passion



To link for passion



innovation **innovation** quality **quality** service **service** →



MCV products are known globally for their high quality and for the excellent quality-price level.

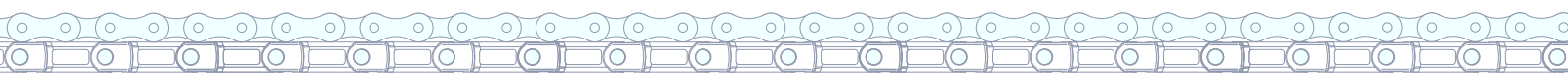
These goals have been reached by permanently improving our efficiency and the quality control of the whole production process.

Our UNI EN ISO 9001:2000 certification - officially awarded by TÜV more than 10 years ago - supports the company

development and guarantees continuously the engineering quality as well as the production process.



To link for passion





1 DROP FORGING

Since our first steps we have personally controlled the forging process. The supervision of steel sourcing is part of a successful strategy.

U.T.S.

For every heat treated batch an ultimate tensile strength test is made and the breaking load results are filed.



2 MACHINING

The automation of our high-tech machining centres guarantees a permanent and supreme quality. All the milling, drilling, and boring operations of the chain links are done in integrated production cells.

QUALITY TESTING

Every chain link is checked and tested. The results are kept in a well organised database available at any time.



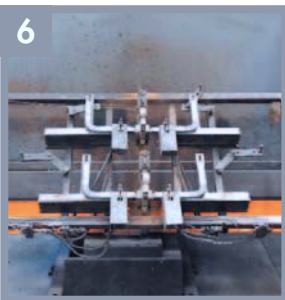
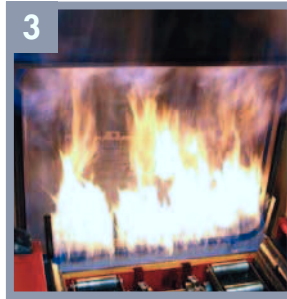
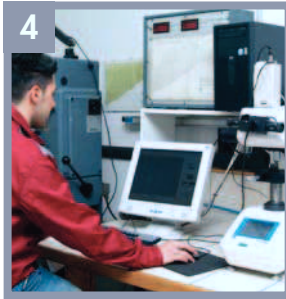
MACHINING

All the dimensional checks are made in-process by our machining centres. All the "defective" pieces are rejected automatically.



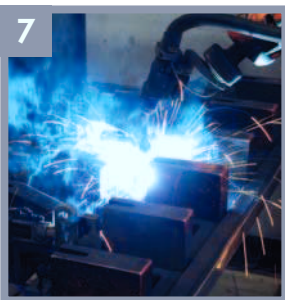
HEAT TREATMENT

State-of-the-art heat treatment plants ensure a uniform surface hardness and depth. This is the heart of our production and the highest demonstration of the "KNOW-HOW" we have achieved over the years.



WELDING PREPARATION

Thanks to the wide range of welding fixtures and automation we have achieved a high level of flexibility in our production of despite a large quality of flight variations.



ROBOT WELDING SYSTEM

Welding is performed by our automatic robots to assure top quality and superior tightening of the welding seams.

WELDING QUALITY

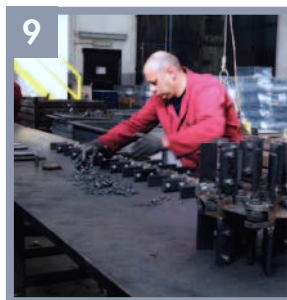
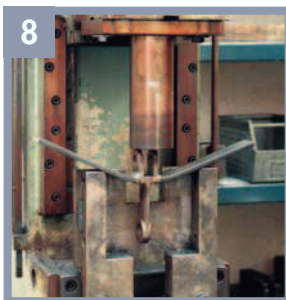
Bending test of the flights is made to control the welding process.

ASSEMBLING

The chain is assembled according to the customers' requirements and dipped in oil for extra protection.

PACKING

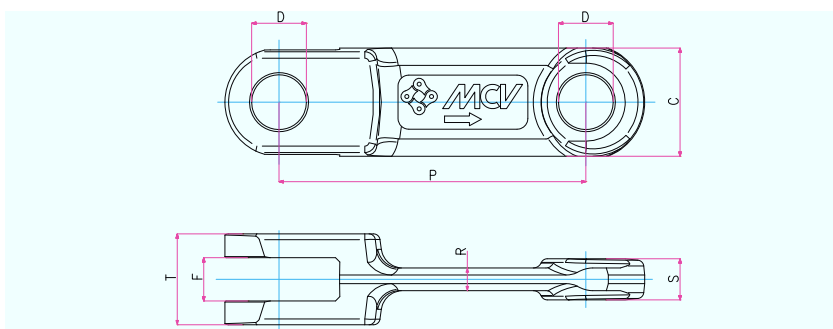
Every chain is bundled and wrapped into plastic sheeting. Upon customer request it can also be packed in wooden boxes ready for sea freight



our production process

Available links

Drop forged chain links



Dimensions

Links	Pitch	T	C	S	F	R	D
10160	101,6	24	36	8	10	6	14
10160-R	101,6	30	36	13	14	8	14
14214	142	30	40	13	14	9	18
14218	142	42	50	19	20	11	25
14226	142	62	50	28	30	15	25
16025	160	50	53	23	25	13	25
20028	200	66	60	30	32	20	30
21650	216	64	72	26	28	20	35
26040	260	70	75	31	33	20	32

Links are available made out of the following materials:

- 18MnCrB5
- C45
- 18NiCrMo5
- 42CrMo4
- X10CrAl7
- Other types of stainless steel upon customer's request

Available heat treatment:

- case hardening
- quenched and tempered hardening

Different shapes

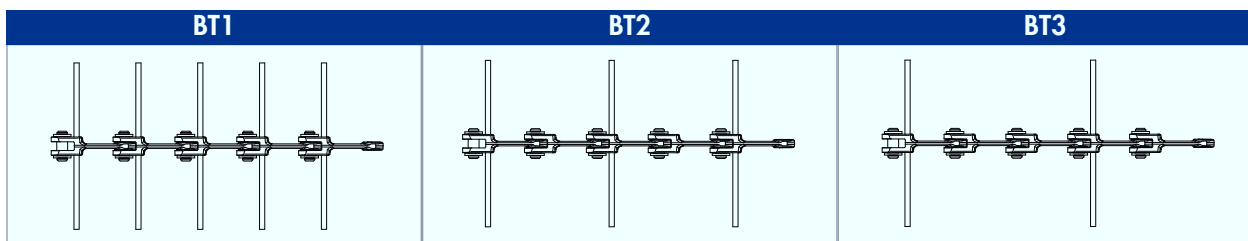
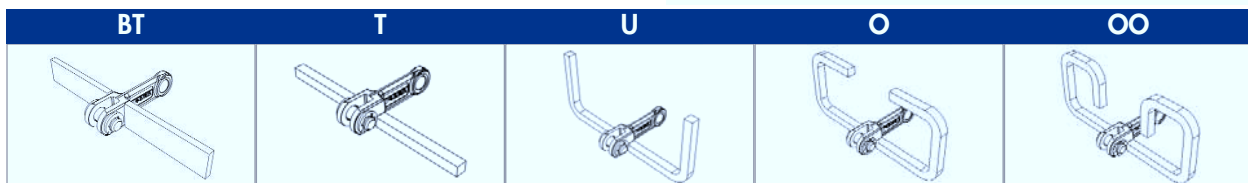
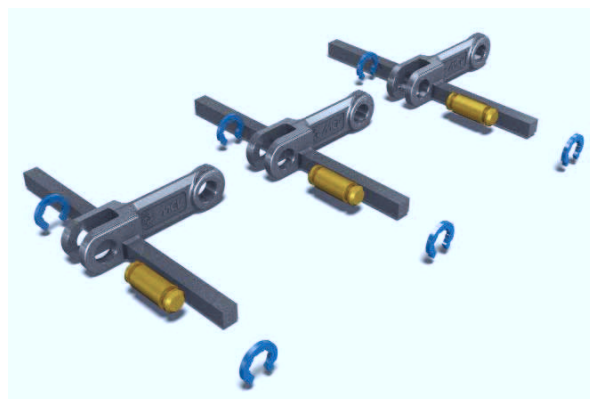


To link for passion

* Other links available from our catalogue and website

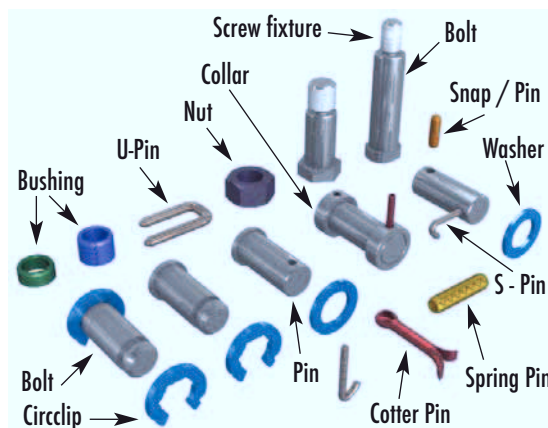
Chain flights and configurations

Links can be assembled in any configuration to match different applications.
Alternative configurations available upon request.



Types of pins

All chains can be assembled with a wide range of pins. Normal chain pins are fabricated in alloy steel, then machined and heat treated. Stainless steel bolts + pins as well as any other materials are available upon customer's request.

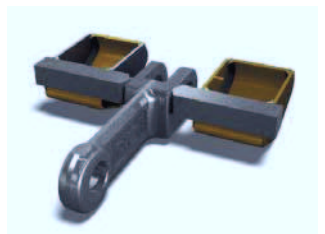
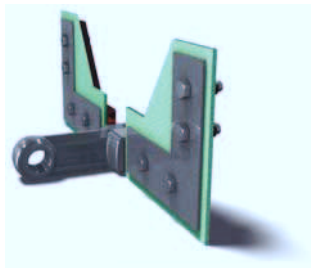
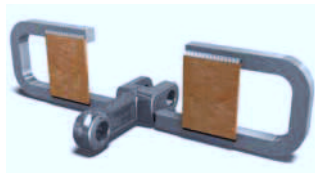
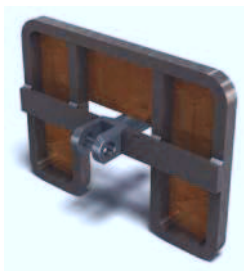




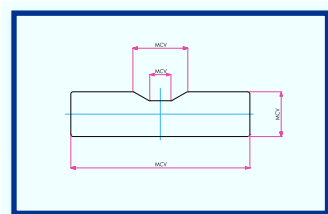
Flight variations

A huge quality of variations is possible, such as:

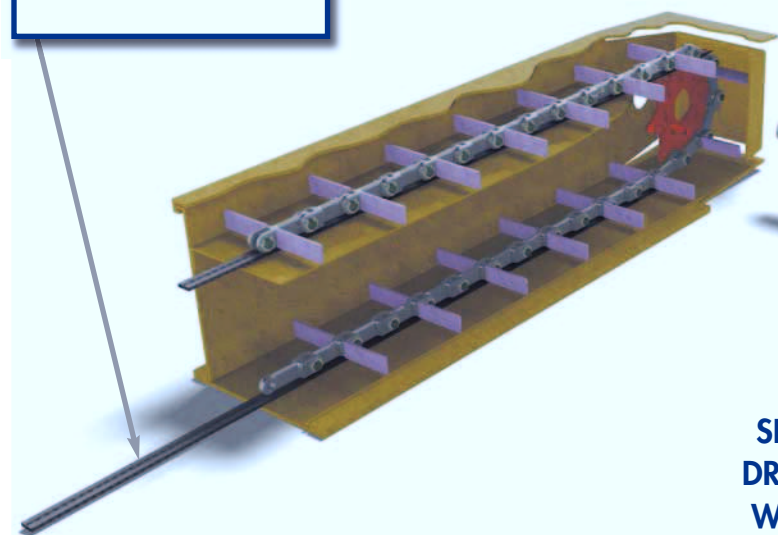
- plastic pads
- blanking plates
- buckets
- central bars for double strand chains
- any other type, please enquire



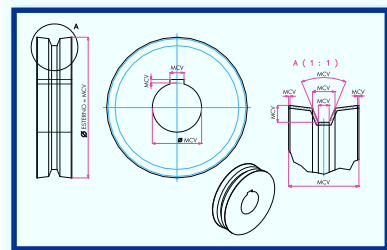
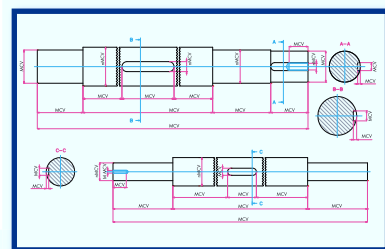
Accessories



MANGANESE WEAR RAILS

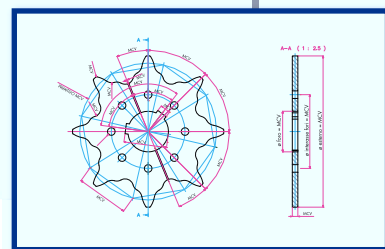


DRIVE SHAFTS

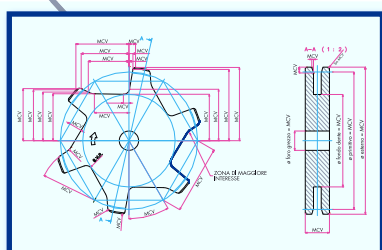


DRIVER WHEELS

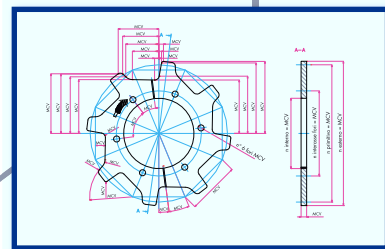
SECTOR DRIVING WHEELS

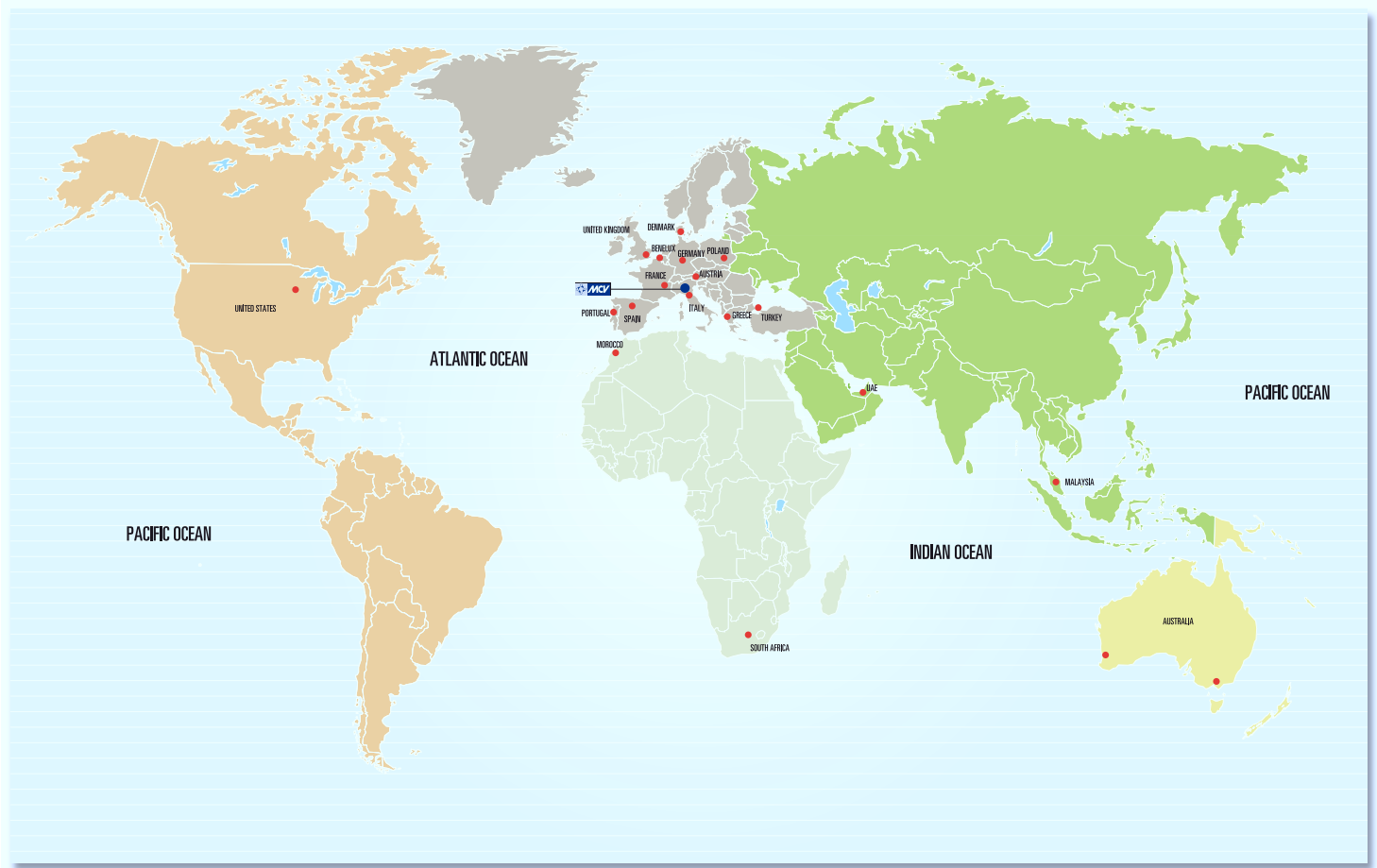


MONOBLOC DRIVING WHEELS



SECTOR DRIVING WHEELS





To link for passion

Manifattura Catene Viganò M.C.V. Spa
Via dell'Industria, 11 - 23897 Viganò (LC) Italia
Tel. +39 039 92134.1 - Fax +39 039 92134.25
mcv.catene@mcvcatene.com - www.mcvcatene.com